

Cahun my pinhole pop up camera

A pinhole is the most basic device for capturing an image on film.

You can make on your own and improve it.

Download the diagrams.

Print the camera diagrams on normal papers or to a cardboard maximum 1mm high.

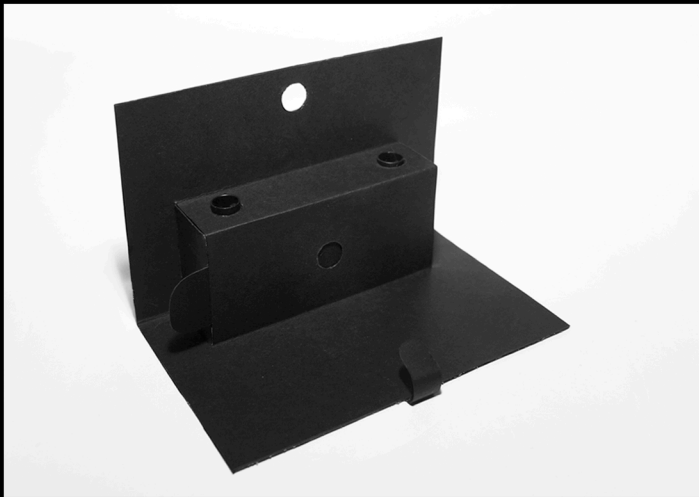
Cut the pieces a part and glue them individually.

The ideal pin hole size for this camera is 0,18 mm.

The exposure time will vary depending on the size of the pin hole and on the ambient temperature.

This camera is rather wide angle: get close to your subject.

It uses standard 35 mm film; the film can be developed with standard C-41 process.



Daniela d'Arielli

Daniela d'Arielli

Cahun my pinhole pop up camera

Download the diagrams.

Print the camera diagrams on normal paper (2A4 or 1A3) or to a cardboard maximum 1mm high.

Cut the pieces a part and glue them individually.

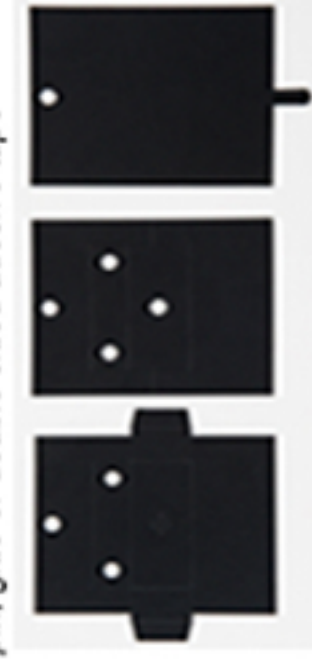
It's important that the only light getting into the camera comes through the pinhole.

When is finished use black electrical tape to make your camera light-tight.

Determine the exposure time by making a test strip. Exposure times vary depending on the ambient temperature but don't worry too much about and just experiment with the first roll of film.

This camera is rather wide angle. It can be hard to tell exactly what the camera is pointing at, you can test the camera angle as part of exposure test.

What you need: 2 A4 papers or 1 A3 paper or thin cardboard max 1 cm high, ruler, art knife, scissors, black electrical tape, roll of 35 mm film, empty 35 mm film canister, aluminum soda can, fine needle or pin, glue or double sided adhesive tape



----- cutlines
- - - - - score lines

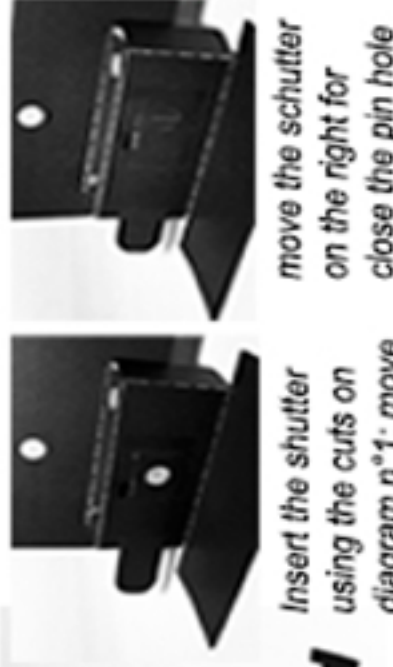
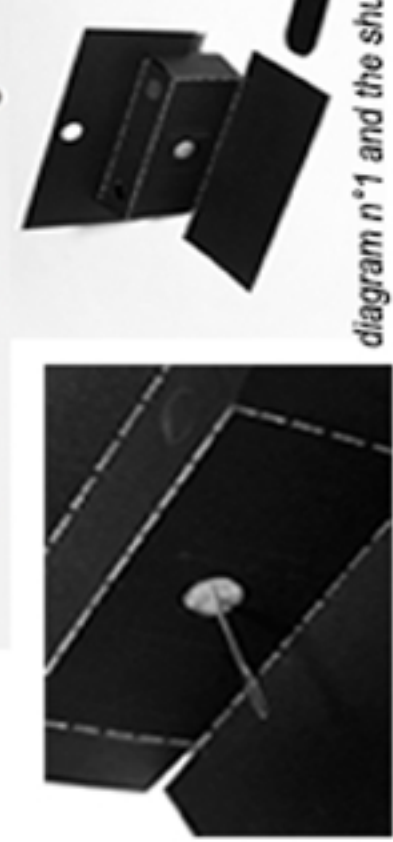


diagram n°1 and the shutter

move the shutter on the right for close the pin hole

Insert the shutter using the cuts on diagram n°1; move on the left the shutter for taking picture

when the exposure is complete replace the shutter; to advance winding the film clockwise from above

remove the shutter and start the exposure

when the film can't be wound on any more it's time to unload it; wind the film back into the original canister and remove the film

Introduce piece n°4, with the film, into the body. Your Cahun is now ready to use

Pull out a little more film from the new roll and thread it through the box. Make sure the emulsion of the film is facing the pinhole. Turn the spindle of the empty canister so that the slack film is wound into it.



1



2



3



4



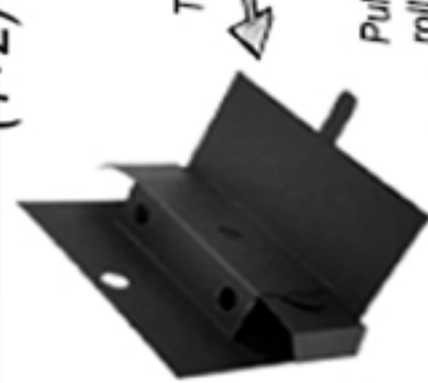
1+2



(1+2)



(1+2)+3



The "body" of Cahun is now ready

remove the shutter and start the exposure

when the exposure is complete replace the shutter; to advance winding the film clockwise from above

remove the shutter and start the exposure

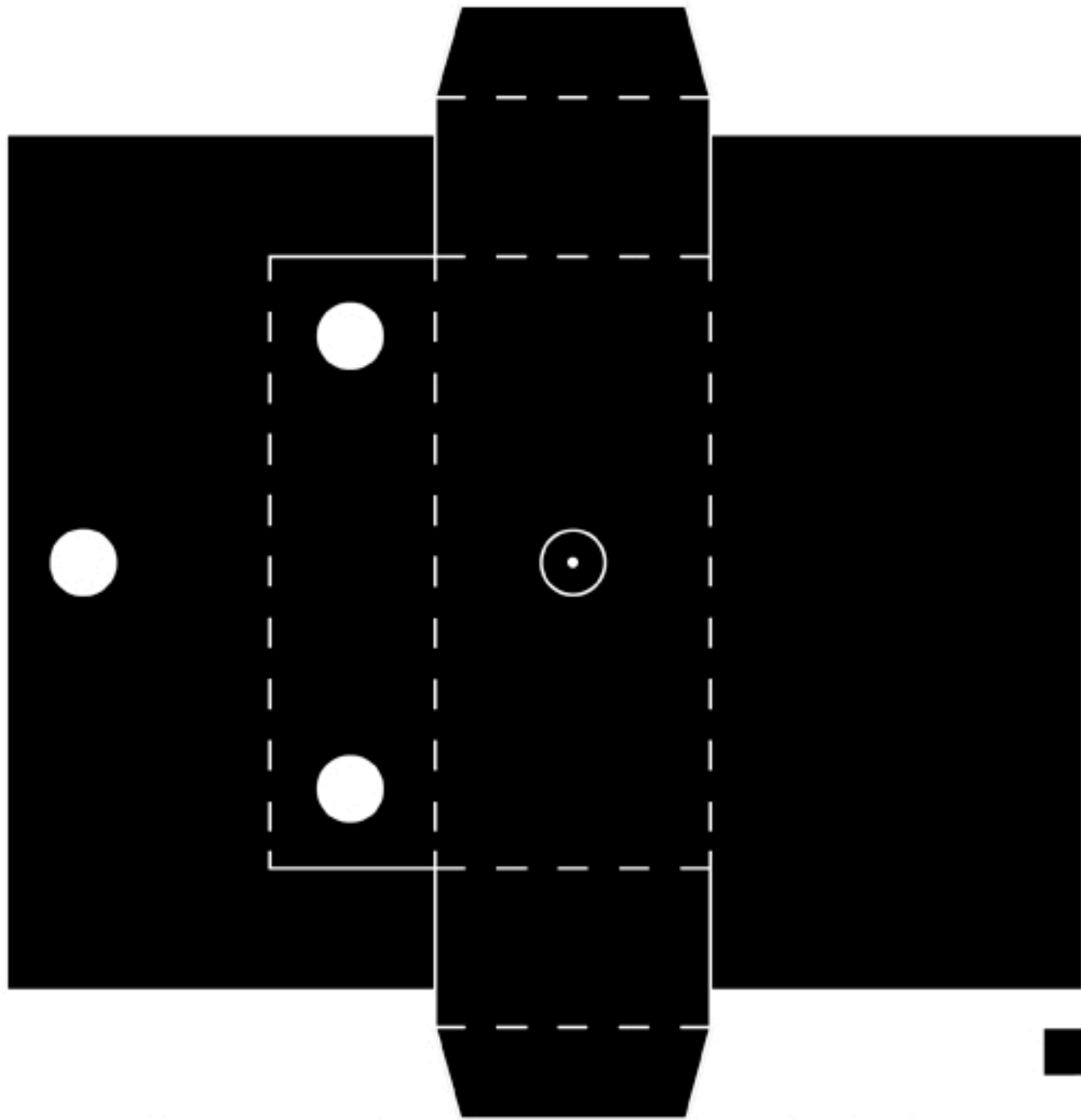
when the film can't be wound on any more it's time to unload it; wind the film back into the original canister and remove the film

Introduce piece n°4, with the film, into the body. Your Cahun is now ready to use

Pull out a little more film from the new roll and thread it through the box. Make sure the emulsion of the film is facing the pinhole. Turn the spindle of the empty canister so that the slack film is wound into it.



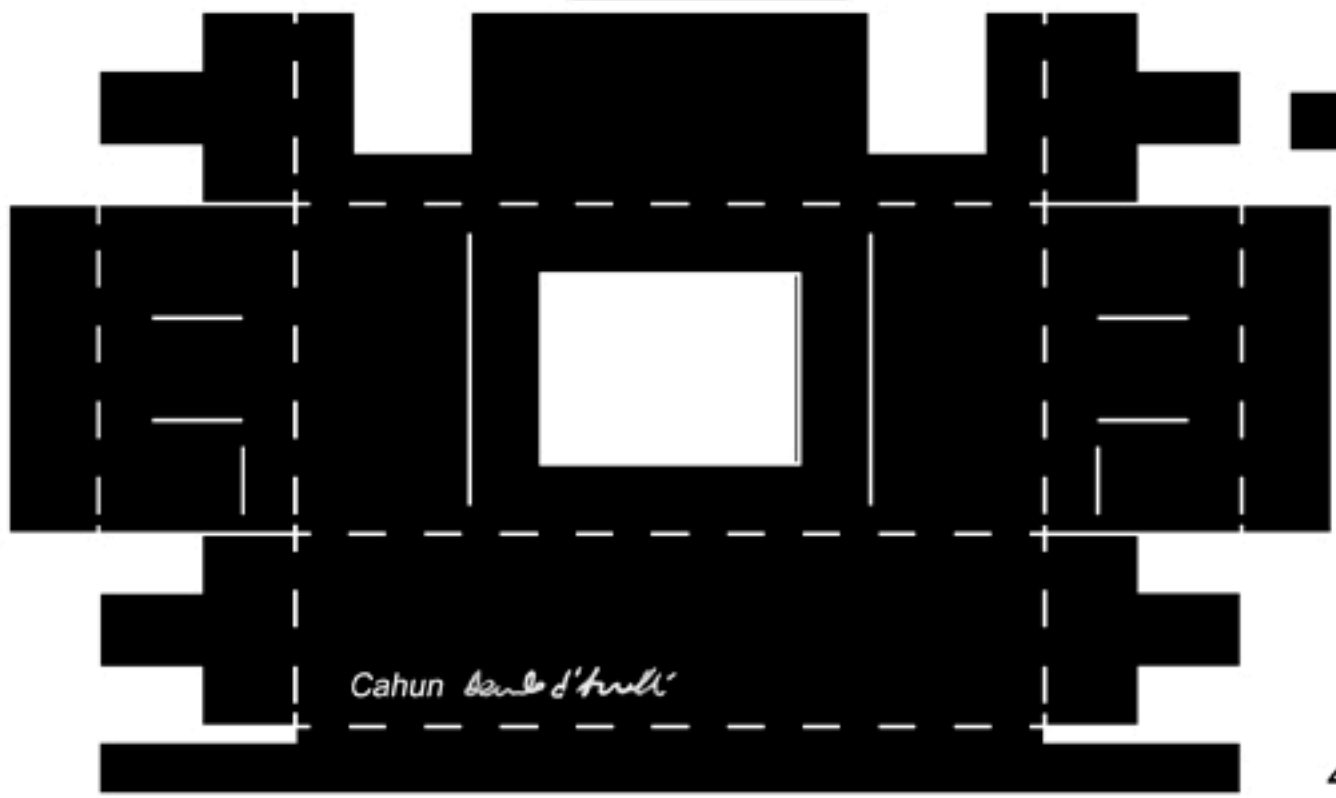
4+3



— cutlines
 - - - - score lines

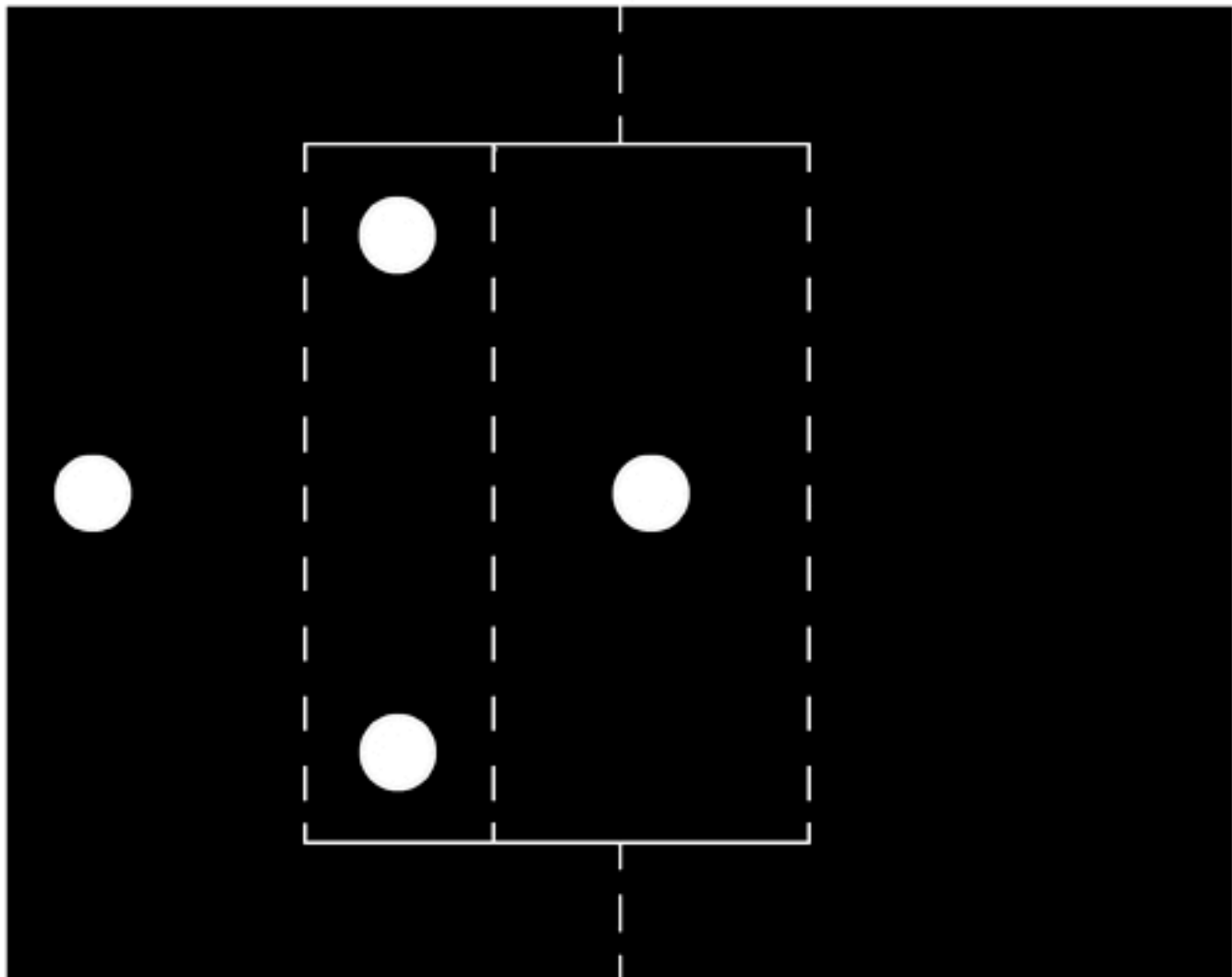
	100 asa	200 asa	400 asa
* (star)	1 sec	1 sec	1 sec
☼ (sun)	3 sec	1 sec	1 sec
☽ (moon)	14 sec	6 sec	3 sec
♂ (male symbol)	150 sec	63 sec	27 sec

1

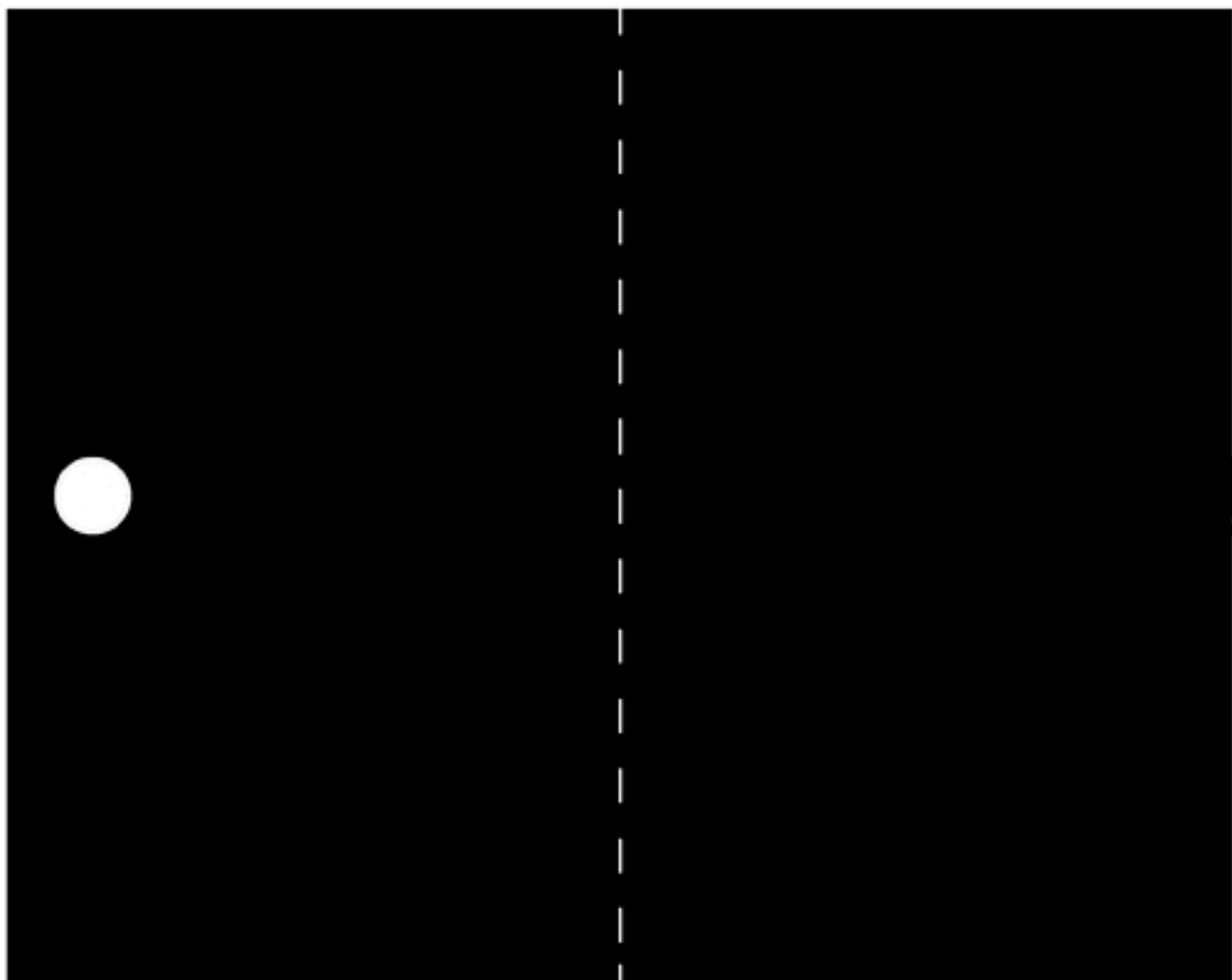


Cahun Daniela d'Arielli

4



2



Cahun
bande d'Archi

3